

# SECTION 16, T.6N., R.1E., S.L.B. & M.

IN WEBER COUNTY

SCALE 1" = 400'

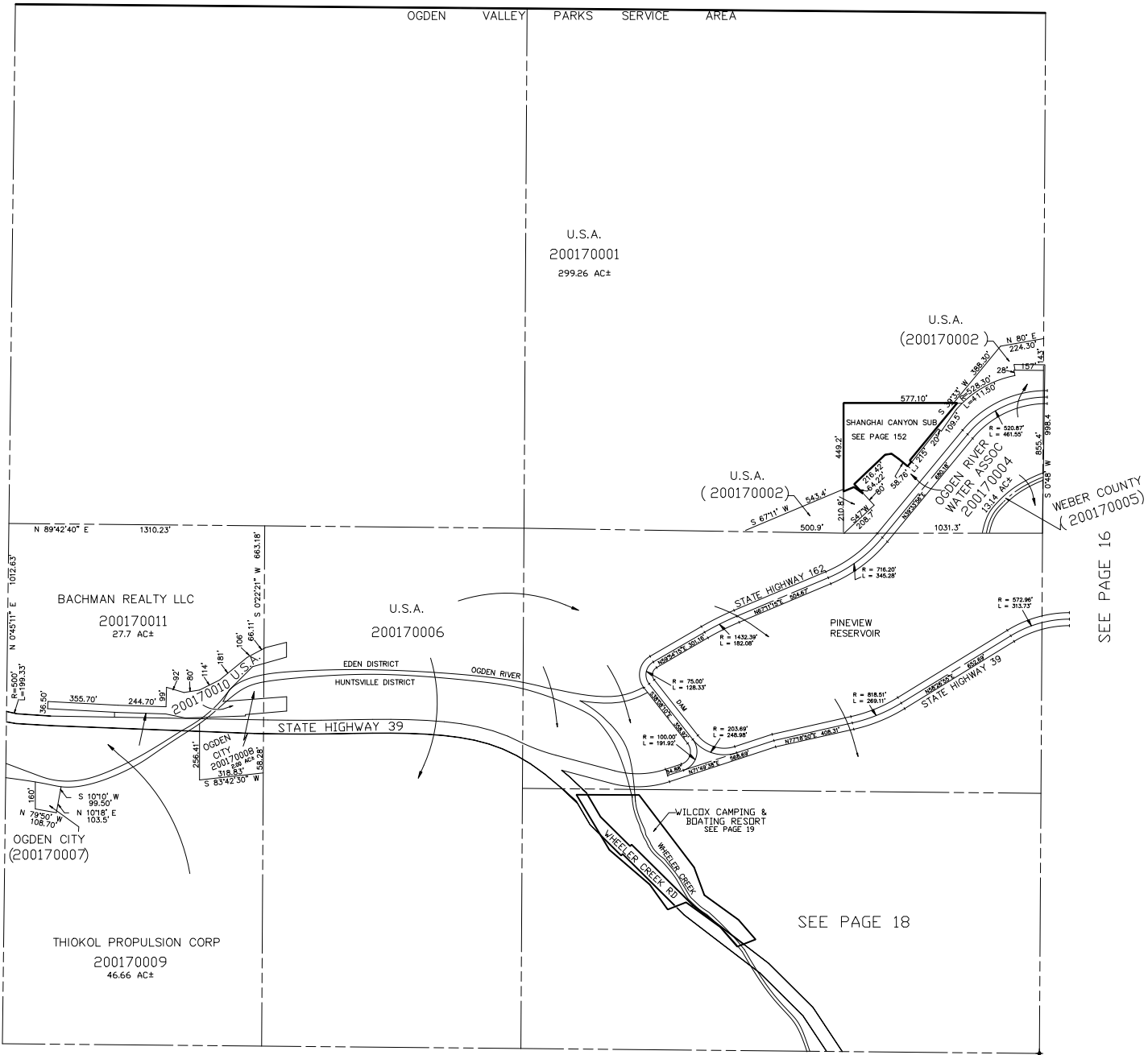
TAXING UNIT: 28

SEE PAGE 4

OGDEN VALLEY PARKS SERVICE AREA

SEE PAGE 20

SEE PAGE 16



NOTE: ALL HIGHWAY DATA ACCORDING TO THE U.S. DEPT. OF INTERIOR BUREAU OF RECLAMATION, PINEVIEW DAM ENLARGEMENT OF HIGHWAYS 162 & 39 FROM STA. 26+42.20 TO STA. 66+24.73 FOR HIGHWAY 162 STA. 26+27.20 TO STA. 65+27.82 FOR HIGHWAY 39

SEE PAGE 34